



Dispense Meters and Valves

Fluid Dispensing Equipment for Vehicle Maintenance



PROVEN QUALITY. LEADING TECHNOLOGY.

Fluid dispense and management has never been easier!



Graco's new family of meters and dispense valves fit a wide range of needs from small repair shops to car dealerships, truck, fleet and off-road maintenance facilities.

- Complete meter and valve product line
- Higher pressure options for longer plumbing runs
- New features to improve your productivity
- Unmatched reliability and durability

Heavy-Duty Applications

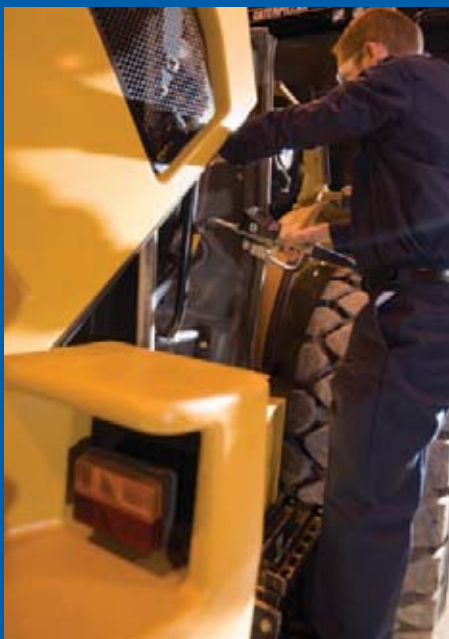
- Mining equipment service shops
- Construction vehicle maintenance
- Off-road maintenance shops

Large Jobs

- Car and truck dealerships
- Fleet maintenance shops
- Public works garages
- Higher volume dispense in-plant



Small Jobs

- Smaller maintenance and repair shops
- Tire/muffler shops and smaller fast lubes
- Lower dispense volume in-plant



Meters and Non-metered Valves Selection

Product Selection

	Car Dealerships	Light/Medium-Duty Truck Dealers	Heavy-Duty Truck Dealers	Fleet Maintenance	Mining Maintenance	Public Works Garages	Construction Vehicle Maintenance	High Volume In-Plant	Small Maintenance Shops	Tire/Muffler Shops	Small Fast Lubes	Independent Repair Facilities	Lower Dispense Volume In-Plant
 <p>SD SERIES</p>	•	•	•	•	•	•	•	•	•	•	•	•	•
 <p>LD SERIES</p>		•			•		•	•	•	•	•	•	

Markets

A Complete Line of Meters and Valves to Choose From

SD SERIES

Standard and heavier duty applications—Car/truck dealerships, fleets, mining, off-road, public works garages, construction, and higher volume in-plant applications

103 bar (1500 psi) maximum working pressure

Up to 53.0 lpm (14 gpm)

Indoor and outdoor use

Automatic nozzle with twist-lock and optional high volume nozzle

Variable flow control

Trigger guard standard

Up to three selectable presets (SDP5, SDP15)

Five year overall warranty, three year electronics warranty

LD SERIES

Lighter duty applications—Small maintenance shops, tire/muffler shops, fast-lubes, independent repair facilities, and lower volume in-plant applications

69 bar (1000 psi) maximum working pressure

Up to 19 lpm (5 gpm)

Indoor use only

Automatic nozzle only

On/off fluid control

Trigger guard is optional

No selectable presets

Two year warranty

SD Series Manual and Preset Meters

Manual Dispense Meter

- 1/2 in NPT - BSPP(G) - BSPT(R) inlet
- 3/4 in NPT - BSPP(G) - BSPT(R) inlet

Preset Dispense Meter

- Manual and preset options available
- Three default presets to allow quick dispense of common volumes
- Familiar locking trigger latch
- 1/2 in NPT - BSPP(G) - BSPT(R) inlet
- 3/4 in NPT - BSPP(G) - BSPT(R) inlet

Large LCD Display and Simple Operator Controls

- Adjusts for easy reading in all lighting conditions
- Easy and familiar navigation
- Calibration easily adjusts from keypad

Durable Cast Body

- Solid construction to stand up to harsh environments and provide years of trouble-free performance
- Durable cast trigger guard prevents accidental triggering

Fluid Inlet Screen

- Replaceable internal filter screen protects meter from contaminants
- Increased surface area reduces pressure drop

Fluid Swivel

- Fluid inlet options (1/2 in NPT - BSPP - BSPT and 3/4 in NPT - BSPP - BSPT)
- Meets standard and high-flow requirements

Fluid Inlet Boots

- A variety of colors to easily identify fluids

Balanced Triggering

- 4-finger pressure balanced triggering for superior comfort and ergonomics
- Trigger guard bumper helps prevent accidental vehicle damage during dispense

SDP5 Preset Model Shown

Engineered for Performance, Innovation and Reliability



Fluid Extension Kits

- Rigid and flexible extensions have automatic twist-lock nozzle or optional high-flow twist-lock only nozzle
- Opens and closes with less than a half turn!
- Flush-mount nozzle valve design prevents leaks and dirt contamination
- Designed for no leak performance

Long Battery Life

- Standard battery—no charging stations needed

New Gear Shape Design

- Improved accuracy in a wide range of flow rates and viscosities, compared to traditional metering technology

Trigger Lock

- Familiar locking trigger for longer dispenses (SDP5 and SDP15 preset models)

Technical Specifications

SD SERIES METERS

Flow range ⁽¹⁾	0.4 to 53 lpm (0.1 to 14 gpm)
Max. working pressure	103.4 bar (1500 psi)
Units of measure	Quarts, pints, gallons, liters (factory set to quarts)
Weight	2.3 kg (5 lbs)
Inlet	3/4 in or 1/2 in - 14 NPT, BSPP(G), BSPT(R)
Outlet	3/4 in - 16 straight thread O-ring boss
Maximum totalizer	999,999 gallons or liters
Max. recorded dispense	999.99 units
Max preset volume	999.9 units (SDP5 and SDP15)
Operating temperature	-4°C to 70°C (4°F to 158°F)
Storage temperature	-40°C to 70°C (-40°F to 158°F)

1. Tested in 10W oil at 70°F. Flow rates vary with fluid pressure, temperature, viscosity, inlet fitting and nozzle type.

Battery	4 AA alkaline or 4 AA lithium
Battery life ⁽³⁾	Preset Models – six months with alkaline Manual Models – one year with alkaline
Wetted parts	Aluminum, sst, pbt/pc, nitrile rubber, cs
Meter pressure loss ⁽¹⁾	5.52 bar @ 45.5 lpm (80 psi @ 10 gpm)
Accuracy ⁽²⁾	±0.5%
Dimensions (w/o extension)	33cm x 9.5cm x 14.6cm (13 in L x 3.75 in W x 5.75 in H)
Warranty	Five years overall, three years electronics
Instruction manual	312865

2. At 9.5 lpm (2.5 gpm) @ 21°C (70°F) with 10 wt. oil and 1 gal (3.8 l) dispensed. May require re-calibration. Out-of-box accuracy ±1.25%.

3. Average shop use with alkaline batteries (included); 30-35% longer life with lithium AA.

SD Series Non-Metered Valves



SDV15 Non-Metered Valve

- Moves fluid up to 56,8 lpm (15 gpm)
- Dispenses motor oils, transmission fluid, and anti-freeze
- Sturdy cast body designed for use in tough environments
- Lock-on trigger
- 1/2 in NPT(F), BSPP(G), BSPT(R) inlet swivel

Technical Specifications

SDV15 VALVES

Maximum recommended flow rate ⁽¹⁾	18.9 lpm (5 gpm)
Maximum working pressure	103.4 bar (1500 psi)
Weight	0.18 kg (0.4 lbs)
Operating temperature range	-40°C to 82°C (-40°F to 180°F)
Inlet	1/2 in NPT, BSPP(G), BSPT(R)
Outlet size	3/4 in, 16 straight thread O-ring boss
Wetted parts	Aluminum, sst, cs, acetal, nitrile rubber, tpe
Warranty	Five years
Instruction manual	312789

1. Tested in 10W oil at 70°F. Flow rates vary with fluid pressure, temperature, viscosity, inlet fitting and nozzle type.

Engineered For Performance



LD Series Manual and Preset Meters

LDM5 Manual Dispense Meter



Two Models to Choose From

- LDM5 with inlet boot, trigger guard and rigid extension with thermal compensating nozzle
- LDM5 with flexible extension and automatic nozzle

LDP5 Preset Dispense Meter



Two Models to Choose From

- LDP5 preset dispense model with inlet boot, trigger guard and rigid extension with thermal compensating nozzle
- LDP5 preset dispense model with flexible extension and automatic nozzle

Fluid Extension Kits

- Standard rigid extension kit and automatic thermal compensating nozzle
- Optional flexible and gear lube extensions available

Operator Controls

- Easy to read LCD display with durable switches for long life

Meter Body

- Rugged engineered material for superior impact resistance and long life
- Ergonomically-designed handle for optimum comfort

Fluid Inlet Screen

- Replaceable internal inlet screen protects meter from contaminants

Trigger

- Two-finger trigger
- LDP5 models have latching trigger

Trigger Guard and Boot

- Protects finishes from scratching
- Black boot and guard is standard, also available in red, blue, green and yellow

LDP5 Preset Model Shown

Technical Specifications

LD SERIES METERS

Flow range ⁽¹⁾	0.4 to 19 lpm (0.1 to 5 gpm)
Max. working pressure	69 bar (1000 psi)
Units of measure	Quarts, pints, gallons, liters (factory set to quarts)
Weight	1.36 kg (3 lbs)
Inlet	3/8" NPT, BSPP(G), BSPT(R)
Outlet	1/2 in NPT
Operating temperature	0°C to 49°C (32°F to 120°F)
Storage temperature	-34°C to -49°C (-30°F to 120°F)
Battery	9V alkaline
Battery life	LDP5 - six months with alkaline LDM5 - one year with alkaline

1. Tested in 10W oil at 70°F. Flow rates vary with fluid pressure, temperature, viscosity, inlet fitting and nozzle type.

Wetted Parts	sst, nitrile rubber, zinc, cs, lcp
Meter pressure loss ⁽¹⁾	6.21 bar @ 18.9 lpm (90 psi @ 5 gpm)
Accuracy ⁽²⁾	±0.5%
Dimensions (w/o extension)	28cm x 8.3cm x 8.3cm (11 in L x 3.25 in W x 3.25 in H)
Maximum totalizer	99,999 gallons or liters
Max. recorded dispense	999.99 units
Max preset volume	99.99 units (LDP5 only)
Warranty	Two years
Instruction manual	312668

2. @ 9.5 lpm (2.5 gpm) @ 21°C (70°F) with 10 wt. oil and 3.8 l (1 gal) dispensed. May require re-calibration. Out-of-box accuracy ±1.25%.

Graco Equipment—Durable and Long-Lasting

Ordering Information

SD Series Meters



SDM5 MANUAL DISPENSE ELECTRONIC METER, 19 LPM OR LESS

NPT	BSPB	BSPT	Description
255350	24H112	24H113	1/2 in swivel, rigid extension and standard automatic non-drip quick-close nozzle for oil
255348	24H108	24H109	1/2 in swivel, flexible extension and standard automatic non-drip quick-close nozzle for oil
255349	24H110	24H111	1/2 in swivel, gear lube extension and standard quick-close nozzle
255802	24H130	24H131	1/2 in swivel, rigid extension and standard quick-close nozzle for anti-freeze
255803	24H132	24H133	1/2 in swivel, flexible extension and standard quick-close nozzle for anti-freeze

Extension kit included, see page 9 for more details.



SDM15 MANUAL DISPENSE ELECTRONIC METER, 53 LPM OR LESS

NPT	BSPB	BSPT	Description
256836	24H150	24H151	1/2 in swivel, rigid extension, high flow, quick-close nozzle for oil
256837	24H152	24H153	1/2 in swivel, flexible extension, high flow, quick-close nozzle for oil
255800	24H126	24H127	3/4 in swivel, rigid extension, high flow, quick-close nozzle for oil
255801	24H128	24H129	3/4 in swivel, flexible extension, high flow, quick-close nozzle for oil

Extension kit included, see page 9 for more details.



SDP5 PRESET DISPENSE ELECTRONIC METER, 19 LPM OR LESS

NPT	BSPB	BSPT	Description
255200	24H106	24H107	1/2 in swivel, rigid extension and standard automatic non-drip quick-close nozzle for oil
255351	24H114	24H115	1/2 in swivel, flexible extension and standard automatic non-drip quick-close nozzle for oil
255352	24H116	24H117	1/2 in swivel, gear lube extension and standard quick-close nozzle
255355	24H122	24H123	1/2 in swivel, rigid extension and standard quick-close nozzle for anti-freeze
255356	24H124	24H125	1/2 in swivel, flexible extension and standard quick-close nozzle for anti-freeze

Extension kit included, see page 9 for more details.

Ordering Information

Accessories for SD Series Meters

SDP15 PRESET DISPENSE ELECTRONIC METER, 53 LPM OR LESS



NPT	BSPP	BSPT	Description
256838	24H154	24H155	1/2 in swivel, rigid extension, high flow, quick-close nozzle for oil
256839	24H156	24H157	1/2 in swivel, flexible extension, high flow, quick-close nozzle for oil
255353	24H118	24H119	3/4 in swivel, rigid extension, high flow, quick-close nozzle for oil
255354	24H120	24H121	3/4 in swivel, flexible extension, high flow, quick-close nozzle for oil

Extension kit included.

NOZZLE EXTENSION REPLACEMENT KITS FOR SD SERIES METERS



NPT	Description
255852	Automatic non-drip quick-close nozzle with rigid extension for oil
255853	Automatic non-drip quick-close nozzle with flexible extension for oil
255854	Non-drip quick-close nozzle with rigid extension for gear lube
255855	Non-drip quick-close nozzle with rigid extension for anti-freeze
255856	Non-drip quick-close nozzle with flexible extension for anti-freeze
255459	Automatic non-drip quick-close nozzle only for oil
255460	Quick-close nozzle only for anti-freeze
255470	Quick-close nozzle only for gear oil
255857	Non-drip quick-close high-flow nozzle with rigid extension for oil and anti-freeze
255858	Non-drip quick-close high-flow nozzle with flexible extension for oil and anti-freeze
255461	Quick-close high-flow nozzle only for oil and anti-freeze

Above nozzles and extension kits serve as replacements for the SDV15 and SDM15 meters.

SWIVEL COVERS FOR SD SERIES METERS



NPT	BSPP	BSPT	Description
15T366	125961	15T366	Black cover hose (standard)
15T367	126115	15T367	Red cover hose
15T368	126116	15T368	Blue cover hose
15T369	126117	15T369	Green cover hose
15T370	126118	15T370	Yellow cover hose

Color code your meters to easily identify which fluid you're dispensing.

FILTER KITS FOR SD SERIES METERS

Part Number	Description
255885	Filter kit includes (10) filters/strainers (15M308), (10) spacers (15M309) and (10) O-rings (155332)

Graco Products—Engineered for Performance

Ordering Information LD Series Meters

LDM5 MANUAL DISPENSE ELECTRONIC METERS, 19 LPM OR LESS

NPT	BSPP	BSPT	Description
255751	24F887	24F881	1/2 in swivel, flexible extension and automatic nozzle for oil and anti-freeze
256215	24F888	24F882	1/2 in swivel, rigid extension, trigger guard/boot, and automatic nozzle for oil and anti-freeze
258693	24F891	24F885	1/2 in swivel, flexible extension and automatic nozzle for oil and anti-freeze

LDP5 PRESET DISPENSE ELECTRONIC METERS, 19 GPM OR LESS

NPT	BSPP	BSPT	Description
255277	24F889	24F883	1/2 in swivel, flexible extension and automatic nozzle for oil and anti-freeze
256216	24F890	24F884	1/2 in swivel, rigid extension, trigger guard/boot, and automatic nozzle for oil and anti-freeze
258694	24F892	24F886	1/2 in swivel, flexible extension and automatic nozzle for oil and anti-freeze



Ordering Information

Accessories for LD Series Meters

NOZZLE EXTENSION KITS FOR LD SERIES METERS



Part Number	Description
255861	Automatic nozzle with flexible extension for oil and anti-freeze*
239949	Automatic thermal compensating nozzle with rigid extension for oil and anti-freeze
239951	Automatic thermal compensating nozzle with flexible extension for oil and anti-freeze
239950	Automatic thermal compensating nozzle with rigid extension for gear lube
239829	Automatic thermal compensating nozzle for oil and anti-freeze without extension
238371	Automatic thermal compensating gear lube nozzle without extension

*Economical extension used on models 255751 and 255277

INLET SWIVEL COVERS FOR LD SERIES METERS

191294	Black
191287	Red
191288	Blue
191289	Green
191295	Yellow



TRIGGER GUARDS FOR LD SERIES METERS

247759	Black
243835	Red
243836	Blue
243837	Green
247760	Yellow



FILTERS FOR LD SERIES METERS

255884	Filter kit includes (10) filters/strainers (114017) and (10) O-rings (109018)
--------	---



Ordering Information SDV15 Valves

SDV15 MANUAL DISPENSE VALVES, 19 LPM OR LESS

NPT	BSPB	BSPT	Description
247712	24H384	24H390	1/2 in swivel, locking open trigger, rigid extension & standard automatic non-drip quick-close nozzle for oil products
247713	24H385	24H391	1/2 in swivel, locking open trigger, flexible extension & standard automatic non-drip quick-close nozzle for oil products
247714	24H386	24H392	1/2 in swivel locking open trigger, gear lube extension & standard quick-close nozzle
247715	24H387	24H393	1/2 in swivel locking open trigger, rigid extension & standard quick-close nozzle for anti-freeze
247716	24H388	24H394	1/2 in swivel locking open trigger, flexible extension & standard quick-close nozzle for anti-freeze
247717	24H389	24H395	1/2 in swivel locking open trigger, 3/4 in - 16 (f) straight thread O-ring boss outlet, and trigger lock, no extension

FILTER KITS FOR SDV15 DISPENSE VALVES

Part Number	Description
256164	Filter kit includes (10) filters/strainers (185416)

At Graco we produce the best equipment in the industry. Everything we manufacture is field tested to perform to the highest quality standards. If it doesn't pass the test, it isn't a Graco product.





ABOUT GRACO

Founded in 1926, Graco is a world leader in fluid handling systems and components. Graco products move, measure, control, dispense and apply a wide range of fluids and viscous materials used in vehicle lubrication, commercial and industrial settings.

The company's success is based on its unwavering commitment to technical excellence, world-class manufacturing and unparalleled customer service. Working closely with qualified distributors, Graco offers systems, products and technology that set the quality standard in a wide range of fluid handling solutions. Graco provides equipment for spray finishing, protective coating, paint circulation, lubrication, and dispensing sealants and adhesives, along with power application equipment for the contractor industry. Graco's ongoing investment in fluid management and control will continue to provide innovative solutions to a diverse global market.

GRACO LOCATIONS

MAILING ADDRESS

P.O. Box 1441
Minneapolis, MN 55440-1441
Tel: 612-623-6000
Fax: 612-623-6777

AMERICAS

MINNESOTA
Worldwide Headquarters
Graco Inc.
88-11th Avenue N.E.
Minneapolis, MN 55413

EUROPE

BELGIUM
European Headquarters
Graco BVBA
Industrieterrein-Oude Bunders
Slakweidestraat 31
3630 Maasmechelen,
Belgium
Tel: 32 89 770 700
Fax: 32 89 770 777

ASIA PACIFIC

AUSTRALIA
Graco Australia Pty Ltd.
Suite 17, 2 Enterprise Drive
Bundoora, Victoria 3083
Australia
Tel: 61 3 9468 8500
Fax: 61 3 9468 8599

CHINA
Graco Hong Kong Ltd.
Shanghai Representative Office
Building 7
1029 Zhongshan Road South
Huangpu District
Shanghai 200011
The People's Republic of China
Tel: 86 21 649 50088
Fax: 86 21 649 50077

INDIA

Graco Hong Kong Ltd.
India Liaison Office
Room 432, Augusta Point
Regus Business Centre 53
Golf Course Road
Gurgaon, Haryana
India 122001
Tel: 91 124 435 4208
Fax: 91 124 435 4001

JAPAN
Graco K.K.
1-27-12 Hayabuchi
Tsuzuki-ku
Yokohama City, Japan 2240025
Tel: 81 45 593 7300
Fax: 81 45 593 7301

KOREA
Graco Korea Inc.
Shinhan Bank Building
4th Floor #1599
Gwanyang-Dong, Dongan-Ku,
Anyang-si, Korea 431-060
Tel: 82 31 476 9400
Fax: 82 31 476 9801

All written and visual data contained in this document are based on the latest product information available at the time of publication. Graco reserves the right to make changes at any time without notice.

Graco is certified ISO 9001.



Europe
+32 89 770 700
FAX +32 89 770 777
WWW.GRACO.COM